



Marble Finish with Envirotex[®]

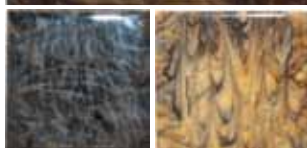
Supplies:

Envirotex:

Brown Marble: Brown Base; Dark Brown, Black and White Veins

Gray Marble: Ivory Black; Gray (hippo gray), burnt umber and cream

Cream Marble: Cream; Gray (paynes gray), burnt umber and ivory black



Directions

1. Paint your surface area with base color and let dry
2. Mix Envirotex as normal. Divide Envirotex into three other cups, 1/6 of the original amount in each, leaving half in the original mixing cup
3. Add and mix paint (oil or acrylic) into the original mixing cup to make your base color. Be sure not to mix in too much paint, just enough to make your mixture opaque. (You will need much less than you think; too much paint will make soft finish). Pour over the surface as normal
4. In each of the other cups, mix in your vein colors, one color for each cup, being sure to add just enough to make your mixture opaque. Drizzle these mixtures, one at a time, onto your surface sparingly
5. Lightly take your paint brush and very lightly comb over the drizzle
6. Move your brush around in wavy patterns. This will mix the colors. (Too much combing may result in muddy colors) Let Envirotex dry and cure as directed

Other Mixture Suggestions

Green Marble: Green Base; White Black and Gray Veins

White Marble: Off White Base; Gray, Black and Brown Veins

Rose Marble: Dusty Rose Base; Off White, Pink and Gray Veins



Marble Finish with Envirotex[®]

Supplies:

Envirotex:

Brown Marble: Brown Base; Dark Brown, Black and White Veins

Gray Marble: Ivory Black; Gray (hippo gray), burnt umber and cream

Cream Marble: Cream; Gray (paynes gray), burnt umber and ivory black



Directions

1. Paint your surface area with base color and let dry
2. Mix Envirotex as normal. Divide Envirotex into three other cups, 1/6 of the original amount in each, leaving half in the original mixing cup
3. Add and mix paint (oil or acrylic) into the original mixing cup to make your base color. Be sure not to mix in too much paint, just enough to make your mixture opaque. (You will need much less than you think; too much paint will make soft finish). Pour over the surface as normal
4. In each of the other cups, mix in your vein colors, one color for each cup, being sure to add just enough to make your mixture opaque. Drizzle these mixtures, one at a time, onto your surface sparingly
5. Lightly take your paint brush and very lightly comb over the drizzle
6. Move your brush around in wavy patterns. This will mix the colors. (Too much combing may result in muddy colors) Let Envirotex dry and cure as directed

Other Mixture Suggestions

Green Marble: Green Base; White Black and Gray Veins

White Marble: Off White Base; Gray, Black and Brown Veins

Rose Marble: Dusty Rose Base; Off White, Pink and Gray Veins